

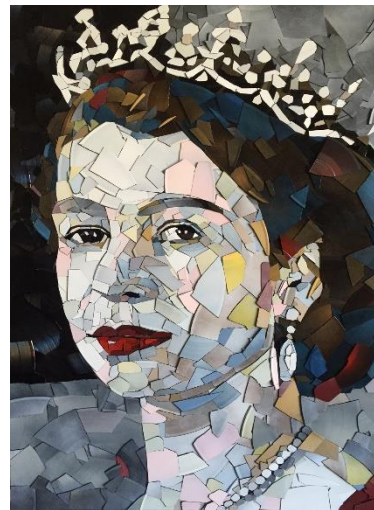
Year 4 Art Knowledge Organiser

<u>Key Vocabulary</u>	
<i>tesserae</i>	Any piece of glass or marble from which the mosaic is built.
<i>mosaic</i>	A design or a picture created with small pieces of material (glass, pebbles, or tiles) placed on a base (floor, wall, or table) and embedded in an adhesive material that holds them in place and fills the spaces between the pieces.
<i>interstices</i>	The gaps in-between mosaic tiles.
<i>vibrant</i>	Colours that are bright and loud.


Antoni Gaudí



Ed Chapman



Mosaic Techniques

<p><i>Direct method</i></p> 	The tesserae are stuck firmly into place to a backing surface. When the adhesive has dried, grout is applied to the mosaic to fill in the gaps.
<i>Paper tiles</i>	Paper tiles are glued directly onto a background.

Key Facts	Antoni Gaudi	Ed Chapman
<i>Life</i>	1852-1926	Unknown
<i>Country of birth</i>	Reus, Spain	UK
<i>Style</i>	Modernism, Mosaics based on culture, architecture and materials.	Portrait using ceramic and stone tiles.